

# **BONALDO**

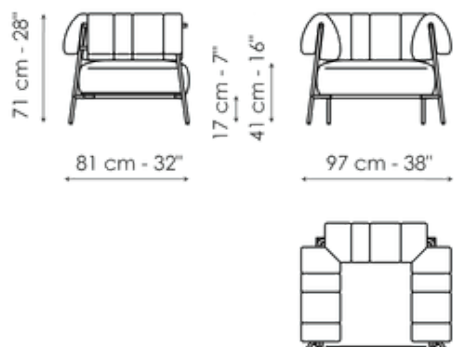
## Tirella



Mixing the ingredients together in an unprecedented manner achieves a new recipe, a new flavor, a new shape. A different concept of the cushion, the way of combining the various elements, the inspiration drawn from the shape of fabric swatches laid on the top of a cutting table and from the clothes hanging out to dry on the line on a sunny day: these are the ingredients for the new recipe devised for the Tirella armchair. At the level of the armrests, the metal frame is “enveloped” by cushions that become structural and concurrently decorative components of the armchair. The upholstery on the seat cushions and backrest/armrest is completely removable.



# Data sheet



## Tirella

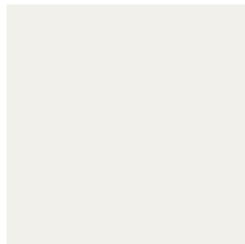
Width: 97cm

Depth: 81cm

Height: 71cm

# Finishes

## Feet



**Painted metal**  
Mat white



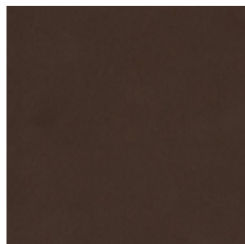
**Painted metal**  
Mat dove grey



**Painted metal**  
Supreme anthracite



**Painted metal**  
Mat black



**Painted metal**  
Mat bronze



**Painted metal**  
Mat lead



**Painted metal**  
Mat copper



**Painted metal**  
Mat brass



**Painted metal**  
Mat pearl gold



**Metal finish**  
Clouded chrome



**Metal finish**  
Brown nickel



**Metal finish**  
Dark nickel

---

Materials, fabrics, leathers, colors and finishes are approximate and may slightly differ from actual ones. You can find the complete collection of Bonaldo fabrics and leathers on the website <https://bonaldo.biz>